

The Power of OpenData

- Three initiatives to support Open Innovation

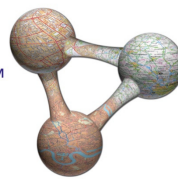
Chris Parker @parkercj
Ian Holt @ianholt
GeoVation Challenge @geovation
www.Geovation.org.uk

21 February 2012 The Society for Location Analysis, Winchester

Insert protective marking - see QSP 032

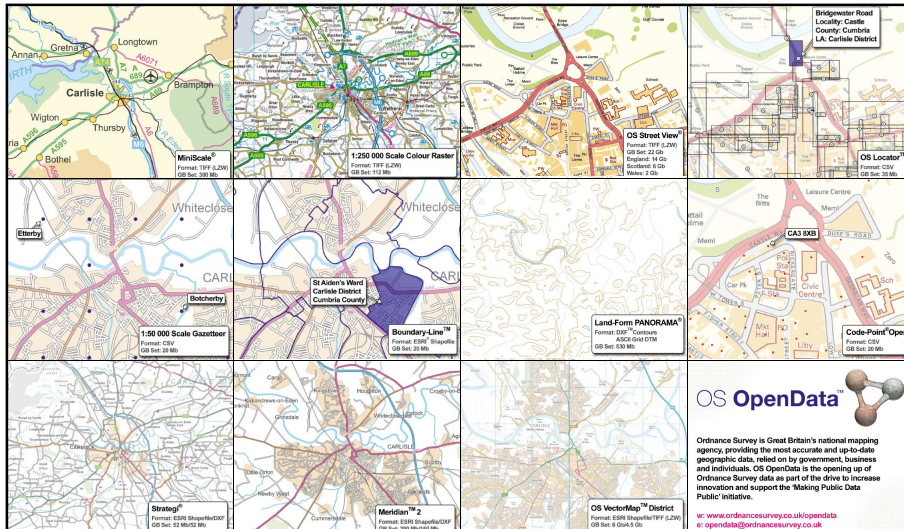
Three initiatives to support Open Innovation

OS **OpenData**™



OS **OpenSpace**®





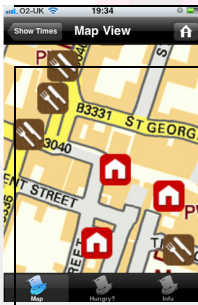
See also: Linked data <http://www.ordnancesurvey.co.uk/opendata/linkeddata.html>

OS OpenData Example



<http://www.icoast.co.uk/>



iCoast is a free website built by One Bright Space for Dorset County Council. It is a tourist site giving information about activities around Dorset. It uses a customised style of OS VectorMap District in conjunction with Land-Form PANORAMA to create a unique looking map. This alongside the quality of the user experience and the amount of data available make this an impressive application.



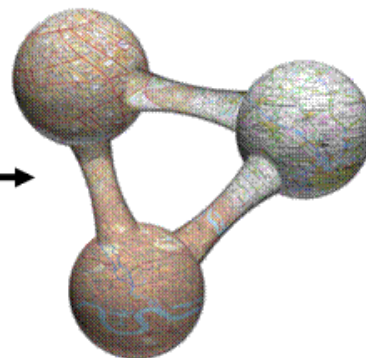
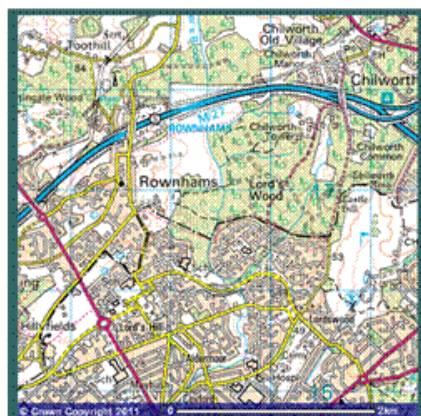
<http://www.cathedralcityguide.co.uk/2011/06/winchester-hat-fair-iphone-app/>

The city of Winchester's Hat Fair is the UK's longest running 'street entertainment' festival and offers a vibrant programme of music, theatre and comedy. For this year's festival a free iPhone application was created to guide visitors to attractions and events around the city.

OS OpenData Example

 <p>more map</p> <p>Open Address Contact Us</p> <p>an InfoTerra Service</p> <p>Home What? What? What? Where & When?</p> <p>more map...</p> <p>new national map service...</p>	<p>www.moremap.co.uk</p> <p>MoreMap is a large scale national mapping content service from InfoTerra. The organisation has further developed vector extraction algorithms to provide buildings and other vectors from OS OpenData products.</p>
 <p>Find Maps</p> <p>Interactive Map</p> <p>Home About Contact Us</p> <p>Find Maps</p> <p>Home About Contact Us</p>	<p>http://free.findmaps.co.uk/</p> <p>Find maps is a map portal that allows users to create, customise, annotate and pdf maps. Find gives instant access to OS OpenData and also provides a simple and useful cartographic toolset that enables users to use OS OpenData to customise their own maps. OS OpenData used on the site are OS BoundaryLine, OS VectorMap District, OS StreetMap, Meridian 2, 1:250k raster and OS LandForm Panorama</p>

"revolution that the internet web age has unleashed"



Open Data Master Classes



OS OpenSpace – What it can do for you

OS SURVEY Discover Ordnance Survey

Mobile site Text size: A A A

Home | Public Sector | Business | Leisure | Education & Research | About us | Support | Site search

You are here: web-services » os-openspace

Business – home

Products – home

- OS MasterMap
- OS VectorMap
- OS OpenData
- Address and location data
- Backstop mapping
- Land and height data
- Roads and logistics data

Web Services – home

- OS OpenSpace and OS OpenSpace Pro
- OS Map
- Printed maps

OS OpenSpace

OS OpenSpace® application programming interface (API) allows our mapping to be displayed on your web page or your online application. We offer two types of services. A **free service** available for non-commercial websites and a **paid-for service** for businesses wishing to charge for access, track assets or build internal applications.

OS OpenSpace API **OS OpenSpace Pro**

Discover Ordnance Survey

Text size: A A A

Business | Leisure | Education & Research | About us | Support | Site search

os » os-openspace » api

Develop a great idea with OS OpenSpace

The OS OpenSpace® Application Programming Interface (API) is a **free service** that lets you create amazing websites and applications using our maps.

OS OpenSpace API is not just for developers – anyone can create an application by following our sample code and tutorials.

About OS OpenSpace **Web-map builder** **Gallery**

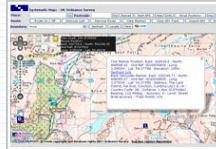
OS OpenSpace is an application programming interface (API) that supports the creation of dynamic, interactive applications that can be...

Design your own map – when you've finished adding markers and routes, collect the final HTML code and copy it into your website editor for an instant...

Have a look at some applications that have been developed and websites that use the OS OpenSpace API. You can also...

OpenSpace Examples

SysMaps



Ordnance Survey maps with search, address look-up, routes, import and export, Wikipedia, live GPS and positioning and other services as part of a suite of maps.

Ordnance Survey Compass



This tool overlays a moveable compass on an OS Map to plot and record map routes. It adjusts for magnetic variation and displays compass bearings, grid references, coordinates and route distances.

Geograph Photos



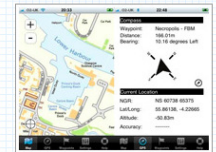
This application loads 25 Geograph photos onto a map at one time.

Kent guided walks



This website provides details of guided walks happening within the Kent region. On the homepage you will see that around 3 000 walks are plotted onto a map using OpenSpace.

OutSide Maps



OutSide maps is an iPhone/iPad/iPod Touch application that enables you to view and navigate a wide variety of UK Ordnance Survey maps using an easy-to-use touch interface.

TFL road traffic cameras



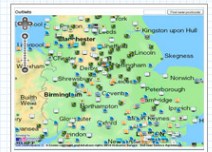
This shows all 181 of Transport for London (TFL) traffic cameras on a clickable map.

Kirklees report street light



This maps all the street lights maintained by Kirklees and shows if they have been recently reported faulty or fixed. Users can report a fault with a light and this is sent into the back office systems.

In-a-tent



This maps all of the camping shops in Britain.

OpenSpace examples

Secret Bases



A mash-up showing all the locations featured on Secret Bases on Ordnance Survey Maps, Google™ Maps and Street View.

Cardiff Walks



Route maps and descriptions for a selection of rambles in the Cardiff area. Previously available only using Google™ maps, but recently converted to use OS OpenSpace maps as well.

Angling Research in Assynt



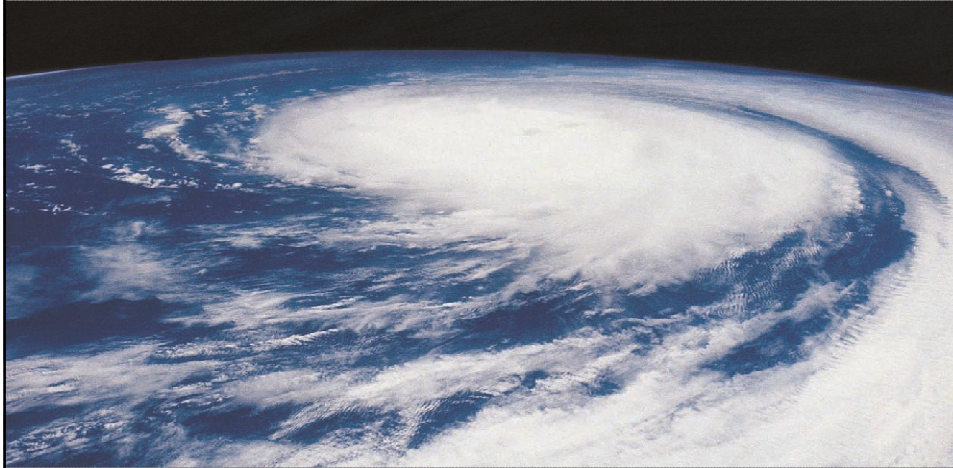
Explore different fishing locations in Assynt, Scotland. Our maps provide details no other online mapping provider can for this remote area. Part of a Big Lottery Fund research project led by Substance.

Bus stop locator



This finds the nearest 25 bus stops (within 300 m of chosen map location). You can click on the marker for details of the bus stop name and on the link to get real-time bus information.

Everything happens somewhere – that's geography!



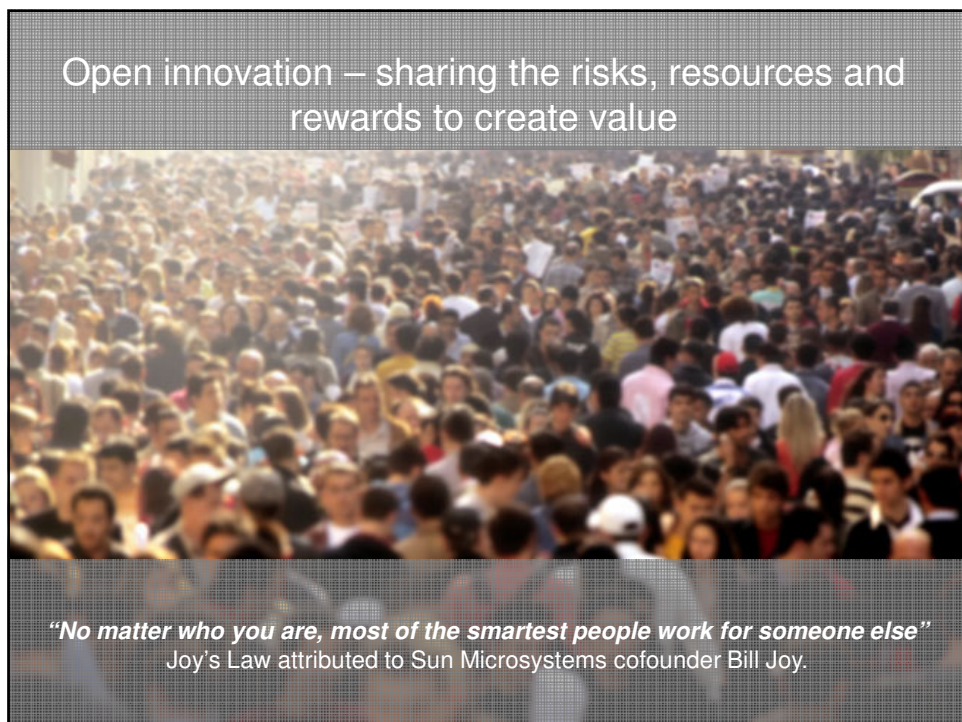
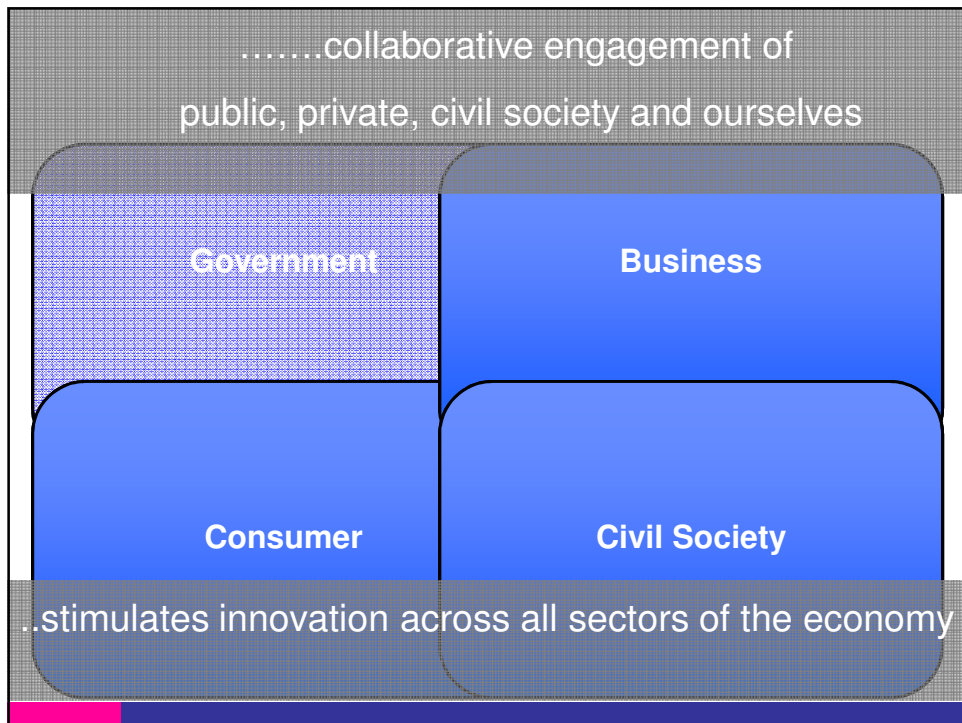
...relationships between people, places, processes and planet

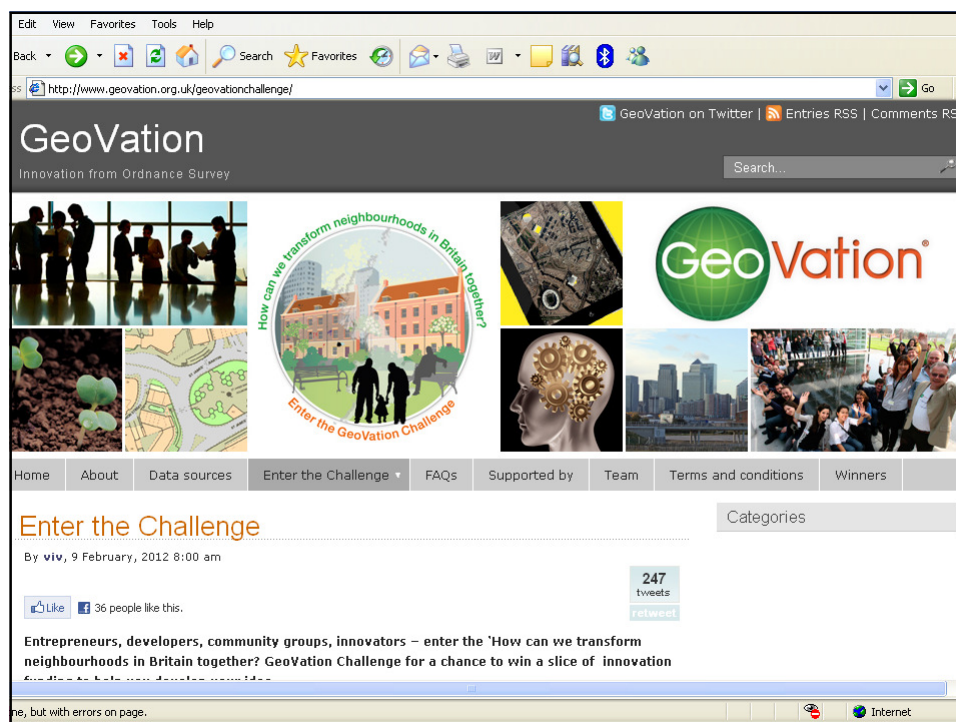
Unprecedented challenges require global thinking....

...local action and



...doing more with less, doing it differently and sustainably





Contact for further information

Customer Service Centre
Ordnance Survey
Adanac Drive
SOUTHAMPTON
United Kingdom
SO16 0AS
Phone: +44 (0)8456 05 05 05
Fax: +44 (0)8450 990494
customerservices@ordnancesurvey.co.uk
www.ordnancesurvey.co.uk